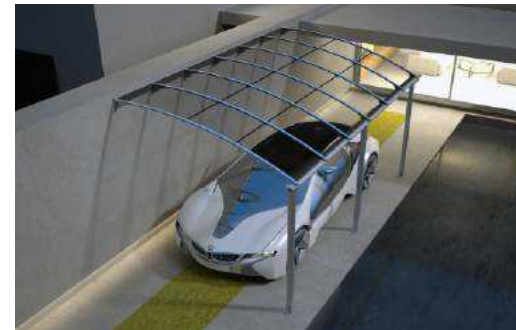


# TRANSPAFORZA

# SEM<sup>®</sup>FORCE

**Awning**  
**Veranda**  
**Pergola**  
**Winter Garden**  
**Bus Station**  
**Transparent Shutter**  
**Sectional Doors**

*Design For Excellence*



# semcom

*Designer - Developer - Producer*





# semcom

**Semcom**, located in Manisa Industrial area (50 km from Izmir), is the first company in this sector since 1995. Today with 26 years experience of our company, we offer modern, architectural and functional solutions to our customers.

Outdoor systems such as pergolas, canopies, yards, patios are offering integrated solutions for buildings. Our exporting experience to more than 46 countries throughout the World, keeps **Semcom** dedicated to product research and development, satisfying the qualitative, aesthetic and functional needs of the demanding and rapidly developing markets.

Semcom has a share in both domestic and international markets with its trademark of **Tranpa Forza** and **Semforce**.

By Transpa Forza trade mark, **Semcom** is producing internationally patented Transparent Shutter Links and kit products like awning, canopy, carport, veranda and pergola systems.

Our products are patented and are presenting new models to the building materials market. Our products have all the essential EN norms, TSE Certificates and CE Certificate. All the products are produced, conforming to ISO 9001.

Mission of Semcom is to present new, economical and best quality products to its domestic branches and international distributors, to all its partners.





# TRANSPARENT SECURITY SHUTTER

TRANSP**FORZA**®

Attack Proof



TRANSP**FORZA**® Security Shutter is designed to be more resistant against attack and to have a better look than the traditional shutters. It is created for many years of use and better appearance.

## SPECIFICATIONS

- \* Virtually unbreakable PCP units
- \* Completely Transparent
- \* 100% Protection against UV radiations
- \* Ultra light - weight compared to steel shutters
- \* Unbreakable and stainless
- \* Fire retardant (Class M2)
- \* Registered trade mark, model and patent
- \* Complies with European security norms
- \* 35 links to cover 1 m2
- \* Weight 9,5 Kg/m2
- \* Motorized Shutter with tubular or central motors

Fire Retardant



### Residential Applications



### Commercial Uses



### Industrial Facilities





## Material and Properties of Shading Systems

### Corrosion Resistance

Aluminium naturally generates a protective oxide coating and is highly corrosion resistant. Different types of surface treatment such as anodising, painting and lacquering can further improve this property. It is particularly useful for applications where protection and conservation are required.

### Anodized Aluminium

Anodizing is an electrochemical process that converts the metal surface into a decorative, durable, corrosion-resistant, anodic oxide finish. Aluminium is ideally suited to anodizing it provides minimum maintenance, highly durability for exteriors applications.

### Roof Material

#### Solid PC Sheet:

A typical and most important feature of this product is certainly being unbreakable. Solid Polycarbonate Sheets also have great advantage against glass products by weight. These products are providing a huge price advantage for both indoor and outdoor applications. Solid Polycarbonate Sheets are suitable for locations, where the security is in the primary importance.

#### PMMA Sheet:

Acrylic (polymethyl methacrylate or PMMA) is a thermoplastic product which is optically transparent, unaffected by moisture and provides strength to weight ratio. This product allows excellent light transmission and transmits up to 92% of visible light, which is more than the glass products. As this product has a great resistance to ultraviolet lights, is used mostly for glazing, protective tiles or car parts.



**AWNING**



**CARPORT**



**PERGOLA - VERANDA**

# TF. ENJOY

Enjoy Your Shade

# TRANSPAFORZA®

## Technical Specifications;

- \*6 or 8 mm PMMA roof sheets, 100% UV protection.
- \*High Quality aluminium structure.
- \*Remote control unit to open and close the roof sheets.
- \*Electric piston to lock the roof system.
- \*Integrated rain gutter for evacuations.
- \*Possibility, adaptations sun screen between roof sheets.
- \*As your choice RAL structure color, and roof sheets color.

## Standard Dimensions

Model	(A) Depth	(B) Width
TF ENJOY 30.30	300 cm	300 cm
TF ENJOY 30.45	300 cm	450 cm
TF ENJOY 30.60	300 cm	600 cm
TF ENJOY 45.30	450 cm	300 cm
TF ENJOY 45.40	450 cm	400 cm
TF ENJOY 45.50	450 cm	500 cm
TF ENJOY 45.60	450 cm	600 cm
TF ENJOY 60.60	600 cm	600 cm

## MOTORIZED SLIDING ROOF

### Roof Sheets Color

Petrol Blue	Ice White	Light Green	Bronze	Light Blue	Gray
-------------	-----------	-------------	--------	------------	------

### Structure Color



80  
kg /m2



40  
m/s





# TF. VERANDA

The Contemporary Design of Free Space

TRANSPAFORZA®

## Technical Specifications;

- \* 3mm Solid PC roof sheet, 100% UV protection.
- \* Anodized aluminium structure.
- \* Integrated rain gutter.
- \* Maintenance-free for many years.
- \* Suitable uses for veranda or wall mounting carport.

## Standard Dimensions

Model	(A) Depth	Moduls	(B) Width
TF VER	300 cm	3	255 cm
TF VER	300 cm	4	338 cm
TF VER	300 cm	5	421 cm
TF VER	300 cm	6	504 cm
TF VER	300 cm	7	587 cm

## TF VERANDA HL: HIGH LOAD CAPACITY (100 KG/M<sup>2</sup>)

Model	(A) HL Depth	Moduls	(B) Width
TF VER. HL	300 cm	7	447 cm
TF VER. HL	300 cm	8	510 cm
TF VER. HL	300 cm	9	573 cm

## Wall Carport Applications

## Roof Sheets Color



## Structure Color

Anodise 9006

Optional RAL

62  
kg /m2



35  
m/s



VERANDA - PERGOLA - CAMELLIA

# TF. SMART VERANDA & CARPROT

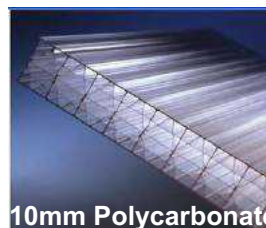
Smart and practical solutions

# TRANSPAFORZA®

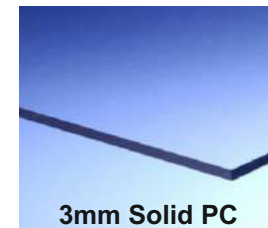
## Technical Specifications;

- \* 10 mm 4wall polycarbonate sheets, OR 3mm Solid PC roof sheet 100% UV protection.
- \* High Quality aluminium structure. Anodized Aluminium or RAL Color powder painting.
- \* Integrated rain gutter for evacuations.
- \* Maintenance free, long years uses.
- \* Easy assembly and possibility to make serial connections.
- \* TF Veranda it's suitable for, wall mounting carport to protect car, caravan, boat or garden equipment and patio applications.

## Roof Sheets



OR



## Standard Dimensions

Model	(A) Depth	Moduls	(B) Width
TF SMART	450 cm	5	346 cm
TF SMART	450 cm	6	414 cm
TF SMART	450 cm	7	482 cm
TF SMART	450 cm	8	550 cm

## Wall Carport Applications

Solid PC  
Sheets Color

Polycarbonate  
Sheets Color

Structure Color  
Anodise 9006 Optional RAL



82  
kg /m2



40  
m/s



VERANDA - PERGOLA - CAMELLIA



# TF. P2 VERANDA

Free Space , Easy Solutions

**TRANSPAFORZA®**

## Technical Specifications;

- \* 3mm Solid PC roof sheet, 100% UV protection.
- \* Anodized aluminium structure.
- \* Integrated rain gutter.
- \* Maintenance-free for many years.
- \* Suitable uses for veranda or wall mounting carport.
- \* As your choice RAL structure color and roof sheets color.

## Standard Dimensions

Model	(A) Depth	Moduls	(B) Width
TF Pv2	300 cm	5	420 cm
TF Pv2	300 cm	6	504 cm
TF Pv2	300 cm	7	587 cm

## Roof Sheets Color



## Structure Color

Anodise 9006

Optional RAL

62  
kg /m2



35  
m/s



VERANDA - PERGOLA - CAMELLIA

# TF. COMFY VERANDA

Adjust your shade

TRANSPAFORZA®

## Technical Specifications;

- \* Horizontal Zip Sunscreen system with the screen Serge Ferrari.
- \* Wood color aluminium structure.
- \* Somfy or Italian Nice motor automatized and Spring systems.
- \* Maintenance-free for many years.
- \* Suitable uses as veranda in your home, restaurant, cafeteria, bar etc.
- \* As your choice RAL structure color.
- \* Optionally LED illuminations.

## Standard Dimensions

Model	(A) Depth cm	(B) Width cm
Comfy Veranda	200-300-400-500	200-250-300-350-400 450-500-550-590

*Possibility to produce different dimensions*

## MOTORIZED OPENING

PVC Screen Color



Structure Color



WOOD COLOR RAL SCALE

VERANDA - PERGOLA - CAMELLIA



# TF. COMFY CAMELLIA

Adjust your shade

# TRANSPAFORZA®

## Technical Specifications;

- \* Horizontal Zip Sunscreen system with the screen Serge Ferrari.
- \* Wood color aluminium structure.
- \* Somfy or Italian Nice motor automatized and spring systems.
- \* Maintenance-free for many years.
- \* Suitable uses as veranda in your home, restaurant, cafeteria, bar etc.
- \* As your choice RAL structure color.
- \* Optionally LED illuminations.

## Standard Dimensions

Model	(A) Depth cm	(B) Width cm
Comfy Veranda	200-300-400-500	200-250-300-350-400 450-500-550-590

*Possibility to produce different dimensions*

## MOTORIZED OPENING

PVC Screen Color



Structure Color



WOOD COLOR RAL SCALE

VERANDA - PERGOLA - CAMELLIA



# TF. CAMELLIA

TRANSPAFORZA®

## TF. CAMELLIA VERANDA



### Technical Specifications;

- \* High Quality aluminium structure. Anodized Aluminium, Wood color or RAL color powder painting.
- \* Maintenance free, usable for long years.
- \* Easy assembly and possibility, to make serial connections.
- \* TF Camellia VERANDA suitable for, garden, balcony, terrace, restaurant, cafeteria and many of different applications.
- \* Optionally LED illuminations.

### Structure Color

WOOD COLOR

RAL SCALE

### Standard Dimensions

Model	(A) Depth	(B) Width
TF CAMELLIA	580 cm	505 cm
TF VERANDA	580 cm	505 cm

*Possibility to produce different dimensions*



VERANDA - PERGOLA - CAMELLIA



# TF. WINGS CARPORT

Modernism and Functionality

TRANSPAFORZA®



## Technical Specifications;

- \*3mm Solid PC roof sheet, 100% UV protection.
- \*Anodized aluminium or RAL color structure.
- \*Side closing aluminium wood color panels.
- \*Maintenance-free for many years.
- \*TF Wings carport is suitable for car and other vehicles to entrance patio.

## Standard Dimensions

Model	(A) Width	Moduls	(B) Depth
TF WINGS	300 cm	4	480 cm

62  
kg /m2



30  
m/s



## Roof Sheets Color

Bronze



## Structure Color

Anodise 9006

Optional RAL

Standard  
Color

RAL SCALE

CARPORT

# TF. ELEGANCE

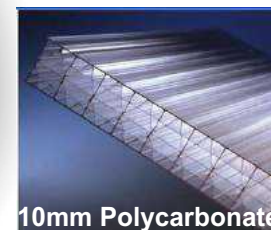
Elegant Protections

TRANSPAFORZA®

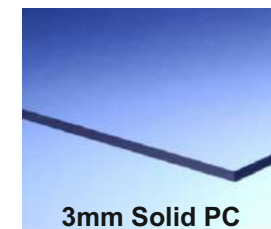
## Technical Specifications;

- \* 3mm Solid PC roof sheet, OR 10 mm 4 cell Polycarbonate sheet, 100% UV protection.
- \* Anodized aluminium or RAL color structure.
- \* Rear closing aluminium wood color panels.
- \* Maintenance-free for many years.
- \* TF Elegance carport is suitable for car and other vehicles to entrance patio.

## Roof Sheets



OR



## Standard Dimensions

Model	(A) Width	Moduls	(B) Depth
TF ELEGANCE	500 cm	4	270 cm

## Roof Sheets Color

Bronze



Anodise 9006

Standard  
Color

Optional RAL

RAL SCALE

62  
kg /m2



30  
m/s



CARPORT



# TF. P2 CARPORT

The privilege of your home

P2 SINGLE



P2 Y JOINT



P2 I JOINT



P2 M JOINT



## Technical Specifications;

- \* 3mm Solid PC roof sheet, 100% UV protection.
- \* Anodized aluminium structure.
- \* Integrated rain gutter.
- \* Possibility to make M Joint, Y Joint and I Joint connections.
- \* Maintenance-free for many years.
- \* TF P2 carport is suitable for car, other vehicles and for multiple car parking.

## Standard Dimensions

Model	(A) Depth	Moduls	(B)Width
TF P2 Single	250 cm	6 (2 Posts)	504 cm
TF P2 M.Joint	504 cm	6 (4 Posts)	510 cm
TF P2 Y .Joint	504 cm	12 (4 Posts)	510 cm
TF P2 I .Joint	504 cm	12 (4 Posts)	1010 cm

## Roof Sheets Color

Petrol Blue	Ice White	Light Green	Bronze	Light Blue	Gray
-------------	-----------	-------------	--------	------------	------

## Structure Color

Anodise 9006

Optional RAL



Standard Color	RAL SCALE
----------------	-----------

62

kg /m2



30

m/s



CARPORT



# TF. DOM CARPOT or PATIO

Functional and Aesthetic

**TRANSPAFORZA®**

## Technical Specifications;

- \* 3mm Solid PC roof sheet, 100% UV protection.
- \* Anodized aluminium structure.
- \* Integrated rain gutter.
- \* Maintenance-free for many years.
- \* TF Dom carport is suitable for car and other vehicles, for entrance patio, and cover the walking area as a tunnel.

## Standard Dimensions

Model	(A) Aperture	Moduls	(B) Width
TF DOM	300 cm	5	421 cm
TF DOM	300 cm	6	504 cm
TF DOM	300 cm	7	587 cm

## TF DOM CARPORT HL: HIGH LOAD CAPACITY (100 KG/M<sup>2</sup>)

Model	(A) HL Aperture	Moduls	(B) Width
TF DOM. HL	300 cm	7	447 cm
TF DOM. HL	300 cm	8	510 cm
TF DOM. HL	300 cm	9	573 cm

## Garden Patio

## Roof Sheets Color

## Structure Color

Anodise 9006

Optional RAL



82  
kg /m2



40  
m/s



**CARPORT**



# TF. SMART CARPORT

Smart and practical solutions

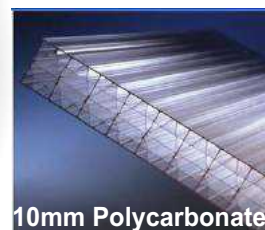
# TRANSPAFORZA®

## Technical Specifications;

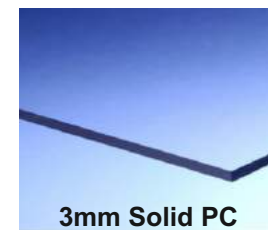
- \* 10 mm 4 cell polycarbonate sheets OR 3mm Solid PC roof sheet 100% UV protection.
- \* High Quality aluminium structure. Anodized Aluminium or RAL Color powder painting.
- \* Integrated rain gutter for evacuations. Maintenance free, long years uses.
- \* Easy assembly and possibility to make serial connections.
- \* TF Smart Carport it's suitable for, carport, multiple carport, caravan, boat or garden equipment and patio applications.



## Roof Sheets



OR



## Standard Dimensions

Model	(A) Depth	Moduls	(B) Width
TF SMART PORT	500 cm	9	550 cm

82  
kg /m2



40  
m/s



Solid PC  
Sheets Color

Polycarbonate  
Sheets Color

Structure Color  
Anodise 9006 Optional RAL



CARPORT

# TF PLUS

No limit extension, with elegance

# TRANSPAFORZA®

## Technical Specifications;

- \* 3mm Solid PC roof sheet, 100% UV protection.
- \* Anodized aluminium structure.
- \* Integrated rain gutter.
- \* Maintenance-free for many years.
- \* TF PLUS carport is suitable for car and other vehicles and for multiple car parking.
- \* No limit for serial connections.



Model	(A) Depth	Moduls	(B) Width
TF PLUS CARPORT	575 cm	7	585 cm

Solid PC  
Sheets Color

Structure Color

Anodise 9006

Optional RAL

Bronze



Standard  
Color

RAL SCALE

62  
kg /m2



30  
m/s



CARPORT



# TF. P3 CARPORT

## Simple Protections

**TRANSPAFORZA®**

### Technical Specifications;

- \* 3mm Solid PC roof sheet, 100% UV protection.
- \* Anodized aluminium structure.
- \* Integrated rain gutter.
- \* Possibility to make M Joint, Y Joint and I Joint connections.
- \* Maintenance-free for many years.
- \* TF P3 carport is suitable for car and other vehicles and for multiple car parking.

### Standard Dimensions

Model	(A) Depth	Moduls	(B) Width
TF P3	270 cm	(3 Posts)	517 cm

### TF P3+2 CARPORT HL: High Load Capacity (120 KG/M<sup>2</sup>)

Model	(A) Depth	Moduls	(B) Width
TF P3	270 cm	(3 Posts)	517 cm

### Roof Sheets Color

Petrol Blue	Ice White	Light Green	Bronze	Light Blue	Gray	Standard Color	RAL SCALE
-------------	-----------	-------------	--------	------------	------	----------------	-----------



**75**  
kg /m<sup>2</sup>

**120**  
kg /m<sup>2</sup>

**30**  
m/s

**CARPORT**

# TF. SUPERIOR

Economic, Quick & Pratic

# TRANSPAFORZA®

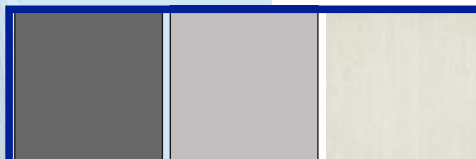


## Technical Specifications;

- \* Horizontal PVC Sunscreen system.
- \* Screen Serge Ferrari or Recasens.
- \* Maintenance-free for many years.
- \* Suitable uses as carport and shade areas.
- \* As your choice RAL structure color.
- \* Optionally LED illuminations.
- \* Quick and simple installation.

Model	(A) Depth	(B) Width
TF PLUS CARPORT	250 cm	500 cm

PVC Screen Color



Structure Color



CARPORT



## TF. DOOR PERGOLA



## TF. DOOR SHEEL



62  
kg /m2



30  
m/s



# TRANSPAFORZA®

### Technical Specifications;

- \* Anodized aluminium structure.
- \* 3 mm Pmma roof sheets 100% UV protection.
- \* Maintenance-free for many years.
- \* Suitable uses as entrance pergola, in your home, work area, restaurant, etc.
- \* As your choice RAL structure color.

### Standard Dimensions

Model	(A) Depth	Moduls	(B) Width
TF DPS	172 cm	2	302 cm
TF DPS	255 cm	3	302 cm
TF DPS	338 cm	4	302 cm

### Technical Specifications;

- \* Anodized aluminium structure.
- \* 3 mm Pmma roof sheets 100 % UV protection.
- \* Maintenance-free for many years.
- \* Suitable uses as entrance pergola, in your home, work area, restaurant, etc.
- \* As your choice RAL structure color.

### Standard Dimensions

Model	(A) Depth	(B) Width
TF Shell	120 cm	200 cm

### Roof Sheets Color

Petrol  
Blue

Ice  
White

Light  
Green

Bronze

Light  
Blue

Gray



### Structure Color

Anodise 9006

Optional RAL

Standard  
Color

RAL SCALE

OTHER PERIPHERAL PRODUCTS

## TF. BUS STATION 'CURVY'



## TF. BUS STATIONS 'ARROW'



62  
kg /m2



30  
m/s



# TRANSPAFORZA®

### Standard Dimensions Curvy

Model	(A) Depth	(B) Width
TF CBS	250 cm	338 cm

MANUFACTURING IN ALL DIMENSIONS

### CURVY & ARROW COMMON SPECIFICATIONS

#### Technical Specifications;

- \* Anodized aluminium structure.
- \* 3 mm Pmma roof sheets 100% UV protection.
- \* Maintenance-free for many years.
- \* Suitable uses Bus Station, Smoking Cabin, Garden Stock Area.
- \* As your choice RAL structure color.

### Standard Dimensions Arrow

Model	(A) Depth	(B) Width
TF ABS	250 cm	338 cm

MANUFACTURING IN ALL DIMENSIONS

#### Roof Sheets Color

Petrol  
Blue

Ice  
White

Light  
Green

Bronze

Light  
Blue

Gray



Standard  
Color

RAL SCALE

#### Structure Color

Anodise 9006

Optional RAL

OTHER PERIPHERAL PRODUCTS



## TF. KIOSK



## TF. BOX



62  
kg /m2



30  
m/s



WITH TRANSPARENT SHUTTER

# TRANSPAFORZA®

### Technical Specifications;

- \* Anodized aluminium structure.
- \* 3 mm Pmma roof sheets 100% UV protection.
- \* Front door transparent motorized shutter.
- \* Maintenance-free for many years.
- \* Suitable uses as kiosk, sales point, out space stock area, etc.
- \* As your choice RAL structure color.

### Standard Dimensions

Model	(A) Depth	(B) Width
TF KIOSK	250 cm	338 cm

### Technical Specifications;

- \* 3mm solid PC roof sheet, 100% UV protection. Lateral closure piece sheets 6 mm PMMA.
- \* High quality aluminium structure. Powder coated anodized aluminium or RAL color.
- \* Aluminium entrance door with lock, optional with push button.
- \* Integrated gutter for drains. Maintenance free, long years of use.
- \* Easy assembly and possibility of making serial connections.
- \* TF Box it is suitable for use as gazebo, winter garden, auxiliary space for restaurant, cafeteria etc.

### Dimensions,

The TF BOX produced according the clients suitable dimensions.  
The system Max Width dimensions is 5600 mm and without limit of depth.

MANUFACTURING IN ALL DIMENSIONS

Roof Sheets Color

Structure Color

Anodise 9006

Optional RAL

Petrol  
Blue

Ice  
White

Light  
Green

Bronze

Light  
Blue

Gray



Standard  
Color

RAL SCALE

OTHER PERIPHERAL PRODUCTS

# TF. BIKE SHELL

TRANSPAFORZA®



## Technical Specifications;

- \* Anodized aluminium structure.
- \* 3 mm Pmma roof sheets 100% UV protection.
- \* Maintenance-free for many years.
- \* Solutions for your vehicles, or can be used as storage area.
- \* Creative solutions for your home, school, work and public area.
- \* Possibility to establish multi connections for more space.

Model	(A) Depth	Moduls	(B) Width
TF BK	190 cm	4	338 cm
TF BK	190 cm	5	421 cm
TF BK	190 cm	6	507 cm

MANUFACTURING IN ALL DIMENSIONS

62  
kg /m2



30  
m/s



Roof Sheets Color



Structure Color

Anodise 9006

Optional RAL



OTHER PERIPHERAL PRODUCTS



## TF. CLASS



**TRANSPAFORZA®**

### Technical Specifications;

- \*4 or 6 mm Pmma roof sheet.
- \*Wood color aluminium structure.
- \*Optionally **LED** illuminations.

Standard Dimensions

Model (A) Depth (B) Width

TF CLASS 149 cm 298 cm

MANUFACTURING IN ALL DIMENSIONS

### Technical Specifications;

- \*3 mm Solid PC roof sheet 100% UV protection.
- \*High Quality aluminium structure. Anodized aluminium or RAL color powder painting.
- \*Integrated rain gutter for evacuations.
- \*Optionally **LED** illumination under rain gutter.

Standard Dimensions

Model (A) Depth (B) Width

TF COMFORT 125 cm 100 cm

## TF. COMFORT



60  
kg /m2



25  
m/s



Roof Sheets Color



Structure Color  
Anodise 9006 Optional RAL



## TF. PRO LUX EXTENDED



## TF. PRO LUX SERIAL



60  
kg /m<sup>2</sup>



25  
m/s



# TRANSPAFORZA®

### Technical Specifications;

\*4mm Pmma roof sheet, Aluminium Structure.

#### Standard Dimensions

Model	(A) Depth	(B) Width
TF PROLUX EXT.	150 cm	150 cm
TF PROLUX EXT.	150 cm	170 cm
TF PROLUX EXT.	150 cm	190 cm

### Technical Specifications;

\*3 mm Pmma roof sheet, Aluminium Structure.

\*No limit for serial connections.

#### Standard Dimensions

Model	(A) Depth	(B) Width
TF PROLUX SER.	150 cm	150 cm

TF PROLUX SERIAL HL: HIGH LOAD CAPACITY (100 KG/M<sup>2</sup>)

#### Roof Sheets Color



#### Structure Color

Anodise 9006

Optional RAL



RAL SCALE

AWNINGS



## TF. DE LUX EXTENDED



## TF. DE LUX SERIAL



60  
kg /m2

25  
m/s

# TRANSPAFORZA®

### Technical Specifications;

\*4mm Pmma roof sheet, Aluminium Structure.

#### Standard Dimensions

Model	(A) Depth	(B) Width
TF DELUX EXT.	100 cm	140 cm
TF DELUX EXT.	100 cm	160 cm

### Technical Specifications;

\*3 mm Pmma roof sheet, Aluminium Structure.

\*No limit for serial connections.

#### Standard Dimensions

Model	(A) Depth	(B) Width
TF DELUX SER.	120 cm	100 cm

No limit for serial connections.

#### Roof Sheets Color



#### Structure Color

Anodise 9006      Optional RAL

# TF. MAXI

TRANSPAFORZA®

## Technical Specifications;

\*3mm Pmma roof sheet, Aluminium Structure.

### Standard Dimensions

Model	(A) Depth	(B) Width
TF PROLUX MAXI	200 cm	90 cm

### Roof Sheets Color

Anodise 9006

Optional RAL

Petrol Blue	Ice White	Light Green	Bronze	Light Blue	Gray		Standard Color	
-------------	-----------	-------------	--------	------------	------	-------------------------------------------------------------------------------------	----------------	-------------------------------------------------------------------------------------

# TF. STANDARD

- \*Brackets are made from Compound Engineering Polymer.
- \*Roof sheet is 3 mm PMMA with 100% UV protection.
- \*Also is protective against all kind of chemicals.

### Standard Dimensions

Model	(A) Depth	(B) Width
TF STD 1.10	100 cm	100 cm
TF STD 1.12	100 cm	120 cm

### Roof Sheets Color

Structure Color

Petrol Blue	Ice White	Light Green	Bronze	Light Blue	Gray		RAL 7016 Anthracite Grey
-------------	-----------	-------------	--------	------------	------	---------------------------------------------------------------------------------------	--------------------------

60  
kg /m2

25  
m/s

50  
kg /m2

20  
m/s



## WHY SEMFORCE SECTIONAL DOOR?

- \* Easy to assemble.
- \* High heat and sound isolation.
- \* Works quiet.
- \* It does not require too much effort while opening and closing.
- \* Provides space saving when it is opened.
- \* Provides opportunity to work according to building structure.
- \* Net width of door is completely used.
- \* Easy to replace-change spare parts.
- \* By adding window systems, illumination of workplace is provided.
- \* By adding a service door, personnel entrance-exit is provided.

***SEMFORCE DOORS are produced according the international world norms and standards.  
All of component of SEMFORCE are certified with EU norms and certifications.***





## SEMFORCE PANELES

### Highest Insulation

SEMFORCE doors have a 40 mm- thick panel section, which is evenly filled with 100% CFC - free PU rigid foam, resulting in excellent thermal and sound insulation.

### Safety

The panel articulations and moving guides have been specially designed not to create any hazard to fingers. Steel wires have a high load factor and the doors are also equipped with extra safety devices, against spring breaking hazards.

### Choice of color

SEMFORCE door panels are available in basic colors (Smooth - Stucco - Ribbed) and wooden color.

### Mechanical Aspects

#### Side Trap Guard

**SEMFORCE** sectional range of doors all feature completely enclosed side frames running the full height of the door to eliminate the possibility of injury to trapped fingers.

#### Safety Tracks

At no stage is there a risk of **SEMFORCE** doors, on the bend or in the straight.

#### Cable break Device

With cable break protection fitted, the door is prevented from falling to the ground if either or both of the door's lifting wires should break.

#### Spring break device

With spring break protection fitted, the door is prevented from falling to the ground if the door's torsion spring breaks.



# RESIDENTIAL GARAGE DOOR

SEMr<sup>®</sup>FORCE



## CONTEMPORARY BUILDING DOORS

Suitable for the designs of the aesthetics, modern houses and buildings. Integrates with your buildings, through various colours and accessories.

## HIGH ISOLATION

DDS doors are in 42 mm. thickness, filled with hard polyurethane foam as homogeneous. 100% CFC free (not harmful for ozone layer).

It provides high degree thermal isolation and sound isolation. Panel thickness is 42 mm. and height 500-610 mm.

## SAVES THE LAND

Sectional doors, set under the ceilings, open in vertical and save land. By means of construction, maximum place is provided in and in front of the garage, for loading and unloading purposes.

## TRACKING SYSTEMS OF GARAGE DOORS



SDS 35



SDS 20



SECTIONAL DOORS

# INDUSTRIAL DOOR

SEM<sup>R</sup>FORCE



## USAGE ADVANTAGES

No area loss, since the door is designed as per the shape of the building. No time waste due to fast running. A safe system. Provides isolation in the working areas. Can be opened & closed by electric motor or by hand.

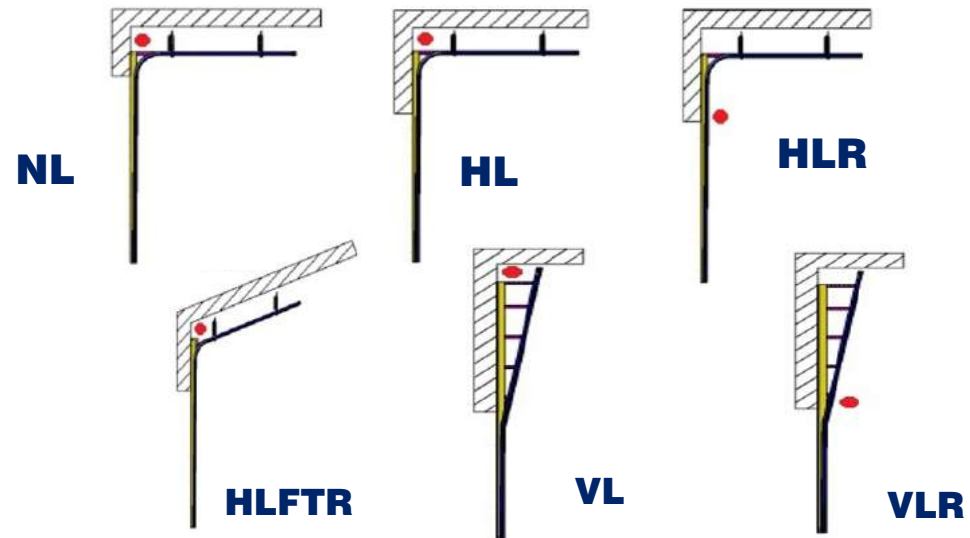
## SAVES THE LAND

Sectional doors, set under the ceilings, open in vertical and save land. By means of construction, maximum place is provided in and in front of the garage, for loading and unloading purposes.

## BEARING SYSTEMS

Lots kinds of bearing systems are offered, to be able to use the suitable door for the building. After the check of the specialists, correct bearing system is installed and thus, maximum area is provided.

## TRACKING SYSTEMS OF INDUSTRIAL DOORS





# TRANSP<sup>IR</sup>FORZA

## SEM<sup>R</sup>FORCE

*Design For Excellence*

**semcom**

Semcom Export Import Yapı Malzemeleri San. Tic. Ltd. Şti.  
Tel : + 90 236 214 03 36 Faks : + 90 236 214 03 39  
mail [export@semcom.com.tr](mailto:export@semcom.com.tr) [www.semcom.com.tr](http://www.semcom.com.tr)